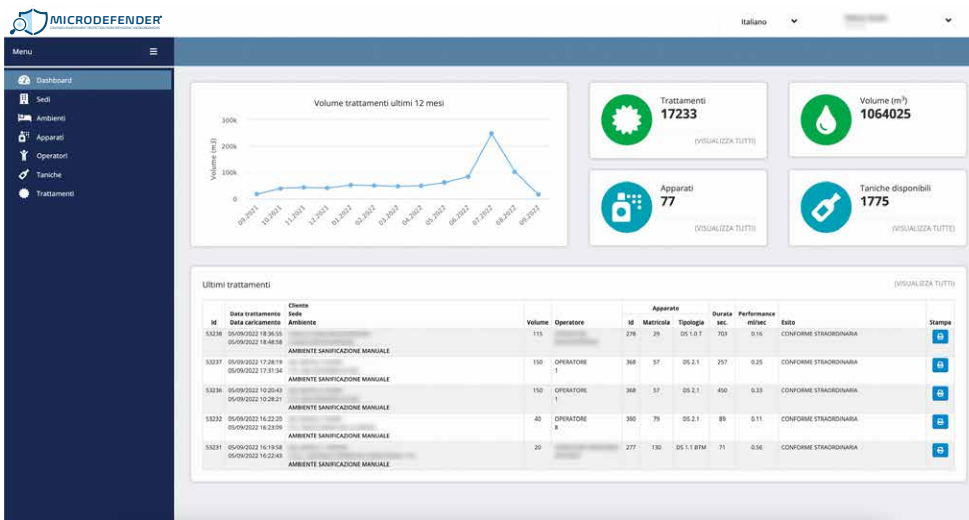


REMOTE CONTROL



MICRODEFENDER®

WEB PLATFORM



The 'Apparati' page shows a list of devices with filters for Cliente, Sede, Matricola, and Tipologia apparati. The table below lists the device details.

Mappe	Cliente	Sede	Tipologia	Matric.	Mac address	Versioni
			05 1.0 BTM	103	56-10-AC-85-E8-01	CPU 1.36 Base 0.18 Bilancia 1.0
			05 1.0 BTM	11	80-1F-12-03-F3-76	CPU 1.32 Base 0.14 Bilancia 1.0
			05 1.0 BTM	13	80-1F-12-04-8F-05	CPU 1.36 Base 0.18 Bilancia 1.0
			05 1.1 BTM	130	88-E8-18-07-06-85	CPU 0.47 Base 0.16 Bilancia 1.0
			05 2.1	25	88-E8-18-07-27-91	CPU 0.40 Base 0.07 Bilancia 1.0
			05 2.1	27	88-E8-18-07-09-30	CPU 0.40 Base 0.05 Bilancia 1.0
			05 3.1	27	80-1F-12-04-9C-E1	CPU 0.19 Base 0.07 Bilancia 1.0
			05 2.1	28	88-E8-18-07-18-50	CPU 0.40 Base 0.07 Bilancia 1.0
			05 1.0 T	29	56-10-AC-85-EC-05	CPU 1.36 Base 0.18 Bilancia 1.0
			05 2.1	29	88-E8-18-07-18-0C	CPU 0.40 Base 0.07 Bilancia 1.0

The Microdefender® The Microdefender® Web Platform acts as a control, monitoring and traceability system for the individual disinfection activities.

WEB PLATFORM

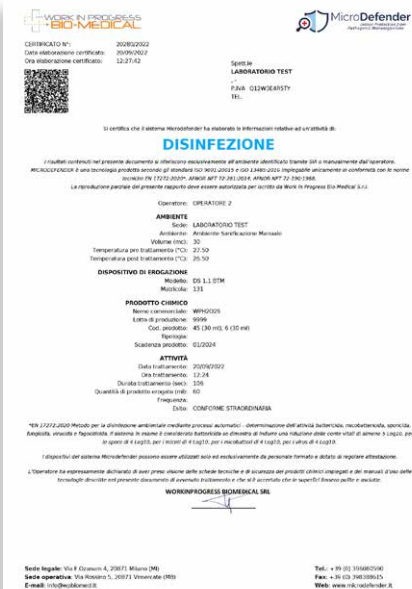


FEATURES

- PURPOSE:** track, monitor, control all disinfection activities; elaborate statistics, self-control plans, device management of remote aerosolization.
- Usage:** the platform has different levels of access, in order to allow any user to be able to consult their activities, depending on the job covered.
- Accessibility:** can be accessed from any electronic device (smartphone, tablet, PC), as long as it is equipped with an Internet connection
- Finality:** the platform, acting as the control center for each disinfection activity, allows the processing of data collected by the various aerosolization devices, in order to create a certificate of successful disinfection for each activity carried out.

- MultiLanguage:** access from any country
- Activity Planning:** creation of ad hoc self-control plans
- Anomalies check:** alert signaling
- Operator list:** each person authorized for the activity
- Room list:** any environment enabled for treatment
- Devices list:** each enabled device
- Bottles list:** quantity, residue, warehouse
- List of treatments:** all treatments performed

- Switch on devices:** it is possible to operate the devices remotely, choosing date, time and frequency of treatment. You can activate or deactivate the sensors detection of people, by choosing the type of operation. It is possible to enable or disable operators and environments.



Certificate of successful activity

Within this document they come report the following information:

- Customer name
- head office, environment name
- volume of the environment
- device used
- type, lot, expiry date of the product used
- date, time of treatment
- duration of treatment
- quantity of product dispensed
- operator who carried out the activity
- result of the activity